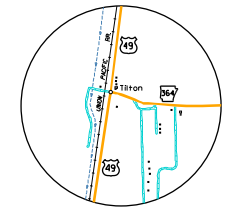
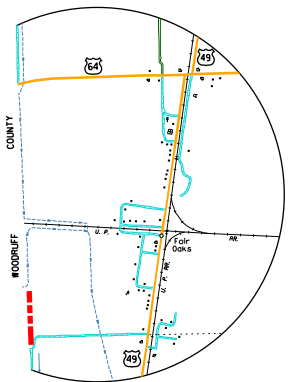


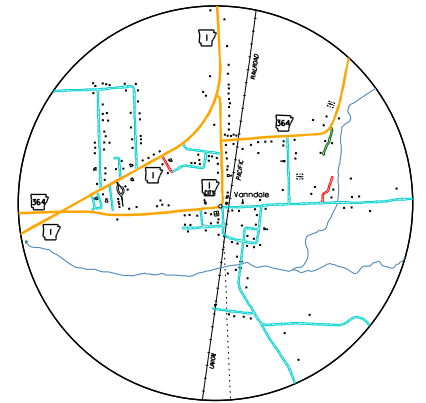
BAY VILLAGE  
Sec. 4, 5, 7, 9 N, R 4 E



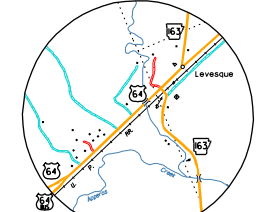
TILTON  
Sec. 17, 18 N, R 1 E



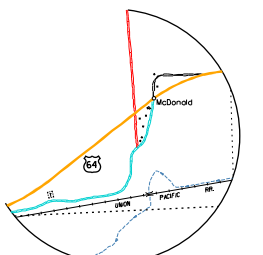
FAIR OAKS  
Sec. 6, 7, 16, 17 N, R 1 E



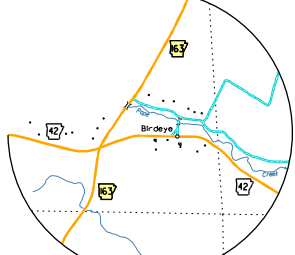
VANDALE  
Sec. 15, 16, 21, 22, 27, 28 N, R 3 E



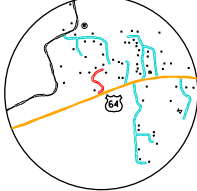
LEVESOLE  
T 7 N, R 4 E



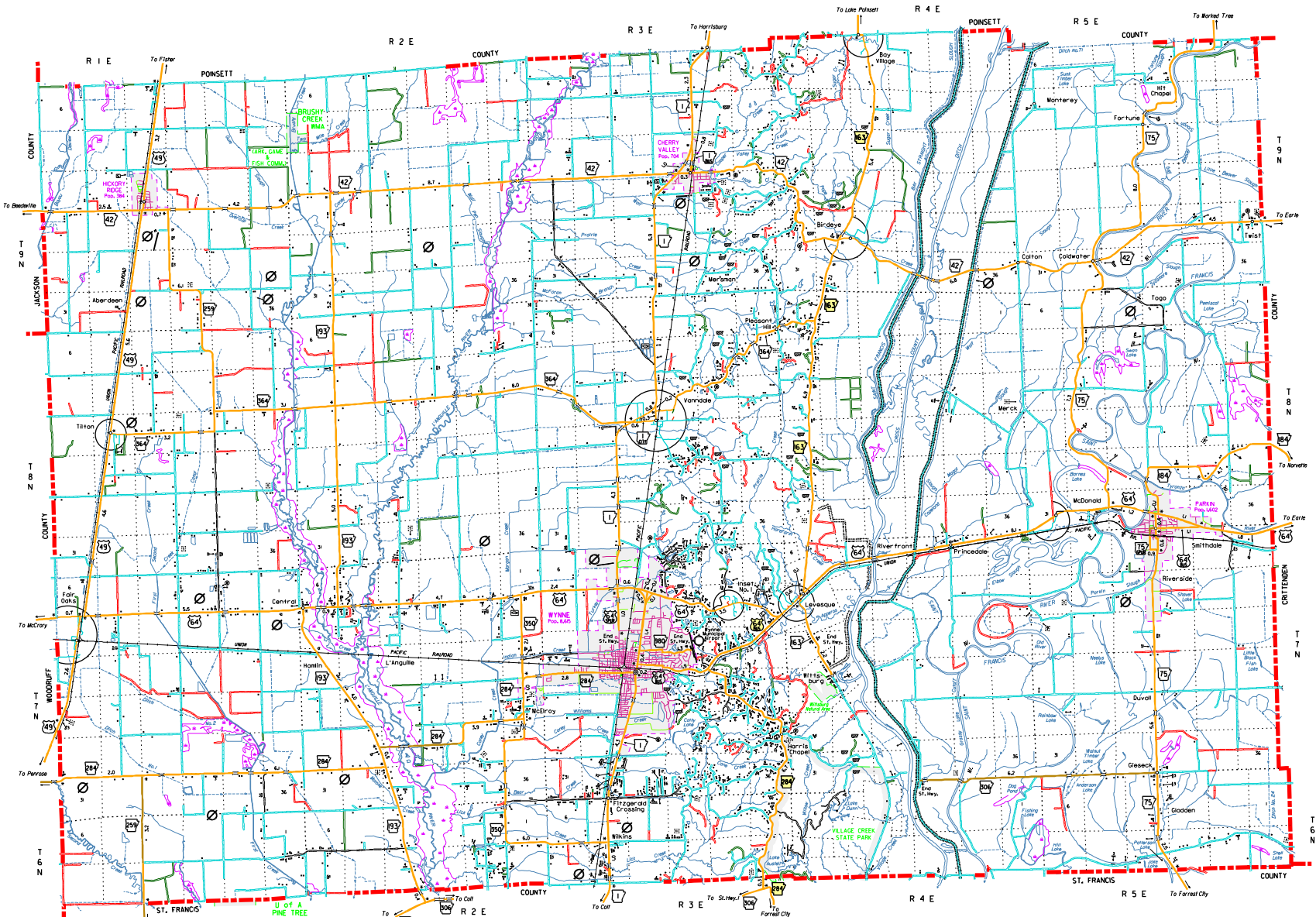
MCDONALD  
Sec. 2, 7, 9 N, R 5 E  
Sec. 6, 7, 17 N, R 5 E



BROEYE  
Sec. 28, 29, 32, 33, 1, 9 N, R 4 E



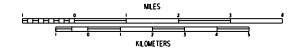
INSET NO. 1  
Sec. 1, 7, N, R 3 E



- LEGEND**
- COUNTY BOUNDARY
  - U.S. LAND TOWNSHIP LINE
  - SECTION LINE
  - PARK OR RESERVATION BOUNDARY
  - PAVED STATE OR U.S. HIGHWAY
  - U.S. NUMBERED HIGHWAY
  - STATE HIGHWAY
  - GRAVEL LOCAL ROAD
  - GRAVEL & DRAINED LOCAL ROAD
  - UNIMPROVED LOCAL ROAD
  - RAILROAD
  - RAILROAD STATION
  - GRADE CROSSING
  - OVERPASS
  - UNDERPASS
  - HIGHWAY BRIDGE
  - LEVEE OR DIKE
  - LEVEE WITH ROAD
  - WEIRAGE BETWEEN PONDS
  - LAKE, RESERVOIR OR POND
  - LAKE, RESERVOIR OR POND WITH DAM
  - MARSH OR SWAMP
  - WIDE RIVER OR STREAM
  - DOCK, PIER OR LANDING
  - INTERMITTENT NAVIGATION
  - SMALL STREAM
  - DRAINAGE DITCH
  - CORPORATE LIMITS AND ROADS THROUGH TOWN
  - COUNTY SEAT
  - OTHER CITIES AND TOWNS
  - MUNICIPAL AIRPORT
  - PRIVATE AIRFIELD
  - FARM UNIT OR DWELLING
  - GROUP OF CLOSELY SPACED DWELLINGS
  - CHURCH OR OTHER RELIGIOUS INSTITUTION
  - SCHOOL
  - POST OFFICE & POST OFFICE AND BUSINESS
  - CEMETERY
  - CHURCH WITH CEMETERY ADJACENT
  - BUSINESS ESTABLISHMENT
  - FACTORY OR INDUSTRIAL PLANT
  - GRAVEL PIT
  - QUARRY
  - AUTO GARAGE OR COUNTY GARAGE
  - FIRE ENGINE HOUSE
  - POWER SUBSTATION
  - TRAILER PARK
  - FISH HATCHERY
  - CAMP OR LODGE
  - GOLF COURSE OR COUNTRY CLUB
  - WATER SUPPLY STANDPIPE OR TANK
  - SEWAGE DISPOSAL PLANT
  - SCENIC HIGHWAY

GENERAL HIGHWAY MAP  
**CROSS COUNTY**  
ARKANSAS

ARKANSAS STATE HIGHWAY AND TRANSPORTATION DEPARTMENT  
PLANNING AND RESEARCH DIVISION  
IN COOPERATION WITH  
U.S. DEPARTMENT OF TRANSPORTATION  
FEDERAL HIGHWAY ADMINISTRATION  
SCALE 1:62,500



Copies of this map are available at a reduced fee from the Arkansas State Highway and Transportation Department, P.O. Box 220-11196, Rock, AR, 72653



NOTES: Enlargements of congested areas are five times map scale unless otherwise noted. Individual maps are available for all active incorporated cities. 4 1/2" x 6 1/2" square maps. Population-1950, 2000 Census. Map issued 11-01-01. Replaces map issued 0-4-97. Field inventory 8/95. Map revisions made from aerial photographs taken 5-9-96. Map construction completed 5-30-01. County map produced using Computer Assisted Cartography.